

REVISIONS		
ISSUE	DESCRIPTION	DATE
DR1	DRAFT RELEASE	02/10/2023
DR2	DRAFT RELEASE	16/11/2023
1	INITIAL RELEASE	15/12/2023
2	SHEET 1; G1 STATION CORRECTED. CORRECTED CABIN ATTDT SEAT LOCATION AT DOOR 3R, NOW FREE STANDING. FWD LH SEATS ROWS 1 THRU 11 AND AFT RH SEATS ROWS 26 THRU 38 REPOSITIONED. AFT RHS SEAT ROW RECLINE DEACTIVATED. ITEM 17 P/N UPDATED TO 3510D389-21-311, ITEM 9 P/N UPDATED TO 3510D389-32-521. ITEM 7 REMOVED AND ITEM 9 QTY UPDATED TO 2. ITEM 8 ADDED, REPLACES ITEM 12 AT ROW 37 RHS. NOTE 12 INTRODUCED. FA SEAT 2R REMOVED. SHEET 2; AFT RHS SEAT ROW POSITION UPDATED.	

- KEY:**
- MINIMUM AISLE WIDTHS
 - NO RECLINE
 - NO RECLINE, NO BREAKOVER
 - NO BREAKOVER
 - H** HANDICAP SEAT
 - S** STRETCHER PROVISION, FULL BREAKOVER

NOTES

- THIS DRAWING IS TO BE CARRIED OUT IN CONJUNCTION WITH ERT-SB-3629.
- SEAT LOCATION DIMENSIONS ARE TO THE CENTERLINE OF FRONT STUD OF INBOARD LEG. SEE BILL OF MATERIALS FOR APPROVED SEAT P/N's.
- POSITION PASSENGER SERVICE INFORMATION UNITS (PSIUs) AS PER PSU LAYOUT DRAWING NO. ERT/1735-211.
- ALL SEATS MUST BE EQUIPPED WITH A LAP STYLE SEAT BELT MEETING TSO C22G USING A METAL TO METAL LATCHING DEVICE.
- ALL PASSENGER SEATS MUST BE FIRE BLOCKED IN ACCORDANCE WITH CS 25.853 (c).
- AISLE WIDTH IS COMPLIANT WITH CS 25.815 (SEE SHEET 2).
- INTERIOR ITEMS NOT SPECIFICALLY CALLED OUT ARE EXISTING ON THIS AIRCRAFT.
- PASSAGEWAY TO TYPE C (OR TYPE III) EXITS IS COMPLIANT WITH AIRBUS FRAME SPECIFICATION 2520 M1F 00 01 00, PARAGRAPH 2.6.3.2.
- INSTALL SEAT TRACK CAPPING IN EXPOSED TRACK AREAS TO ACCOMMODATE NEW SEAT LOCATIONS.
- ENSURE EACH PAX PLACE HAS AN APPROVED LIFE JACKET.
- LH DIMENSIONS SHOWN. RH DIMENSIONS IDENTICAL UNLESS OTHERWISE STATED.
- ASSIST SPACES ARE 20" X 20" IN AREAS WHERE OHSC ARE INSTALLED UNLESS ASSIST SPACE IS LOCATED IMMEDIATELY FWD OF PAX SEATING, OR WHERE NO OHSC IS INSTALLED, IN WHICH CASE THE ASSIST SPACES ARE 20" X 12".

FLAG NOTES

- RECLINE FUNCTION OF APPLICABLE SEAT ASSEMBLIES DEACTIVATED IN ACCORDANCE WITH RECARO CMM 25-23-89. EIRTECH SERVICE BULLETIN ERT-SB-3629 REFERS.

AR	QTY	Item No	Part Number	Description	Note
22			ACIFL00105-289/ACI	SEAT-TRACK CAPPING	ALT. ABS5096AA29-12 OR PER IPC
21	1		3510D389-31-211	SEAT TPL LH IAT	
20	26		3510D389-31-011	SEAT TPL LH STD (HC)	
19	4		3510D389-31-311	SEAT TPL LH STD (HC)	
18	1		3510D389-31-521	SEAT TPL LH IAT EXIT	
17	1		3510D389-21-311	SEAT DBL LH NARROW (NO COATHOOK, SPCL LATCH OPENS I/B ONLY)	
16	1		3510D389-31-221	SEAT TPL LH IAT (EXIT)	
15	3		3510D389-31-071	SEAT TPL LH STD (HC, STRETCHER PROVISION)	
14	1		3510D389-31-061	SEAT TPL LH NARROW (HC, STRETCHER PROVISION, NO BACKREST TABLE)	
13	1		3510D389-32-211	SEAT TPL RH IAT	
12	28		3510D389-32-011	SEAT TPL RH STD	
11	2		3510D389-32-311	SEAT TPL RH STD (HC)	
10	1		3510D389-22-011	SEAT DBL RH NARROW (NO COATHOOK, SPCL LATCH OPENS I/B ONLY)	
9	2		3510D389-32-521	SEAT TPL RH IAT EXIT	
8	1		3510D389-32-051	SEAT TPL RH NARROW	
7					
6					
5	1		3510D389-32-061	SEAT TPL RH NARROW (HC, STRETCHER PROVISION, NO BACKREST TABLE)	
4					
3					
2					
1	1		ERT/1735-210-01	LOPA A321, 220Y	

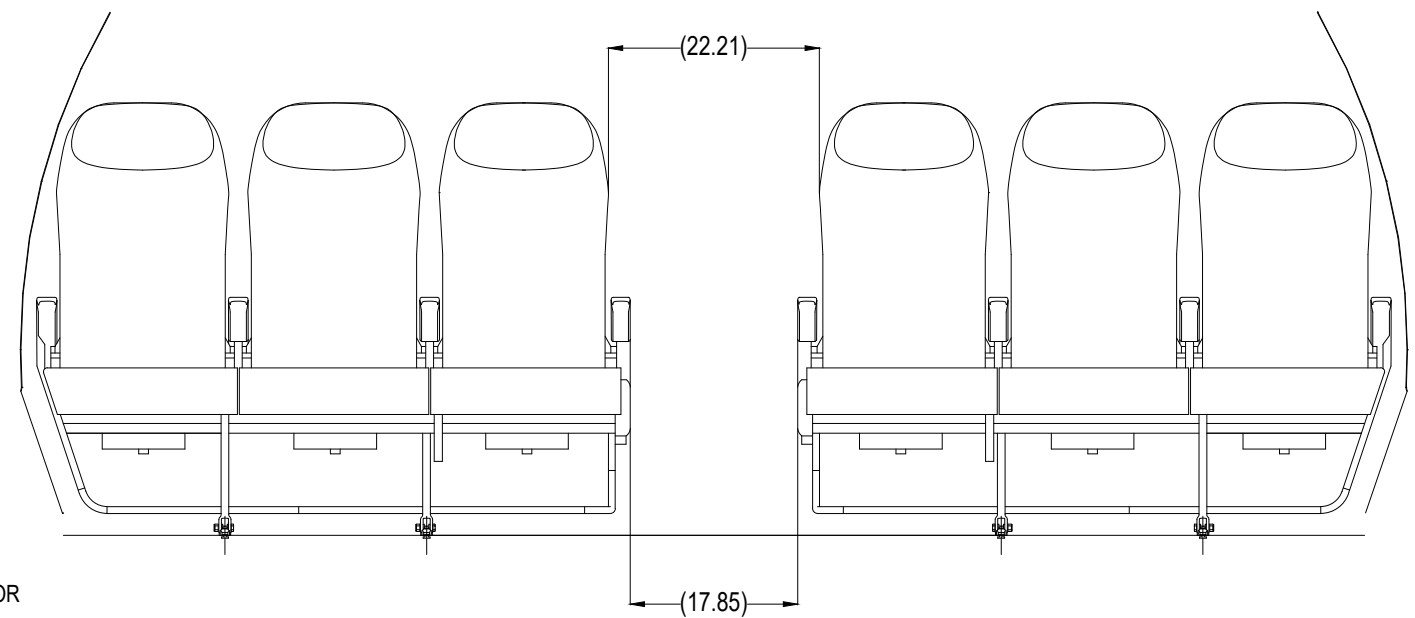
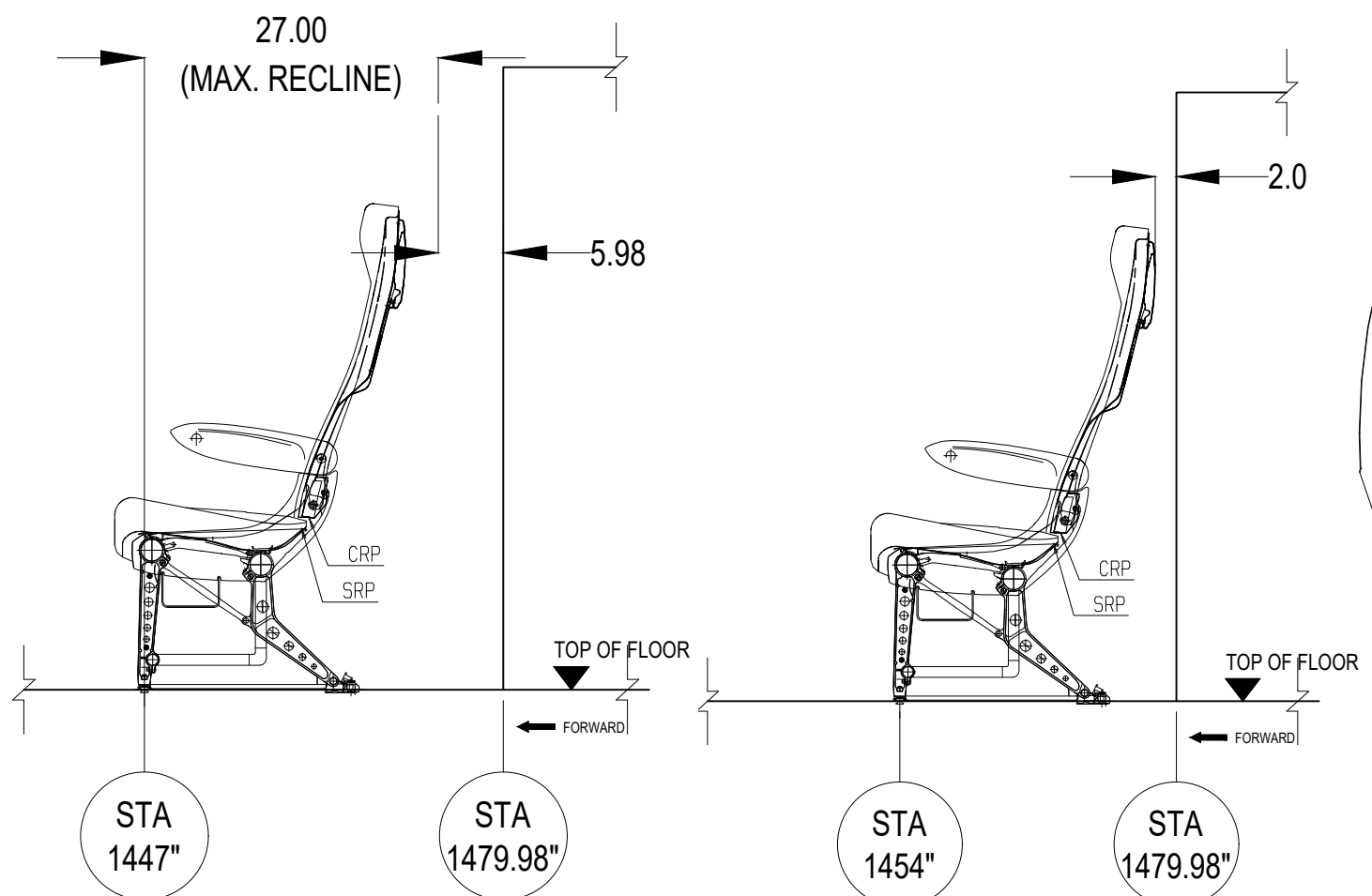
2	1	DR2	DR1	Issue
AM	AM	LOF		Drawn
LOF	-	-		Checked
N/A	-	-		Electrical & Avionics
LOF	-	-		Cabin Safety
LOF	-	-		Structures
NC	-	-		Office of Airworthiness

THE ORIGINAL INTENT OF THIS DRAWING IS TO BE APPROVED BY THE AUTHORITY OF THE AIRCRAFT MANUFACTURER.
2024 © COPYRIGHT EIRTECH AVIATION SERVICES LLC. INFORMATION CONTAINED HEREIN IS CLASSIFIED AS UNCLASSIFIED PROPERTY RIGHTS AND SHALL NOT BE REPRODUCED BY ANY THIRD PARTY WITHOUT THE PRIOR WRITTEN PERMISSION OF EIRTECH AVIATION SERVICES LLC.

Title: LOPA A321, 220Y
 Aircraft Type: A321
 Drawing Issue No: 2
 Scale: NTS
DRG No. ERT/ 1735-210
 Sheet 1 of 2

THIRD ANGLE PROJECTION DO NOT SCALE ALL DIMENSIONS IN INCHES UNLESS OTHERWISE STATED

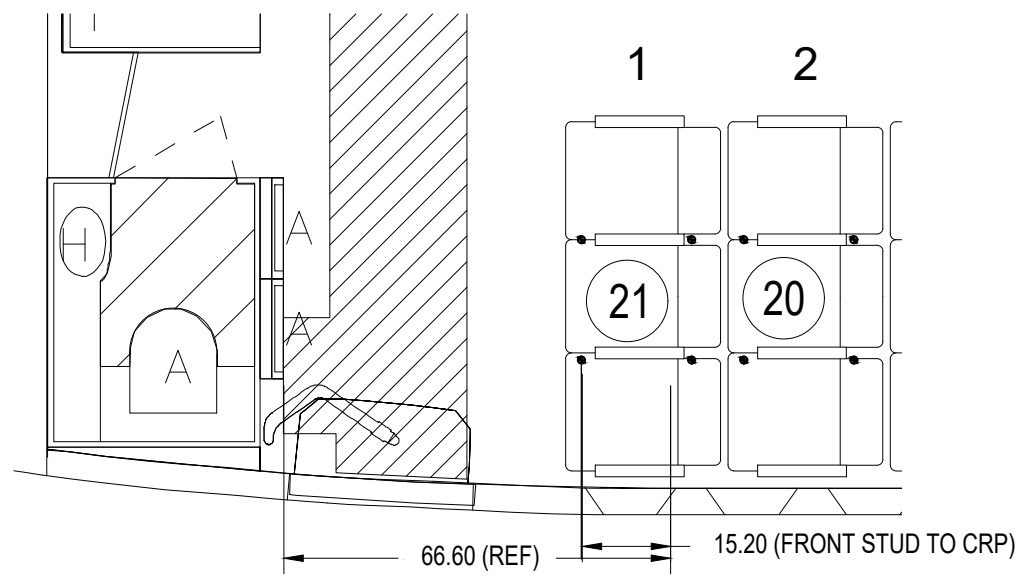
DRG No ERT/ 1735-210



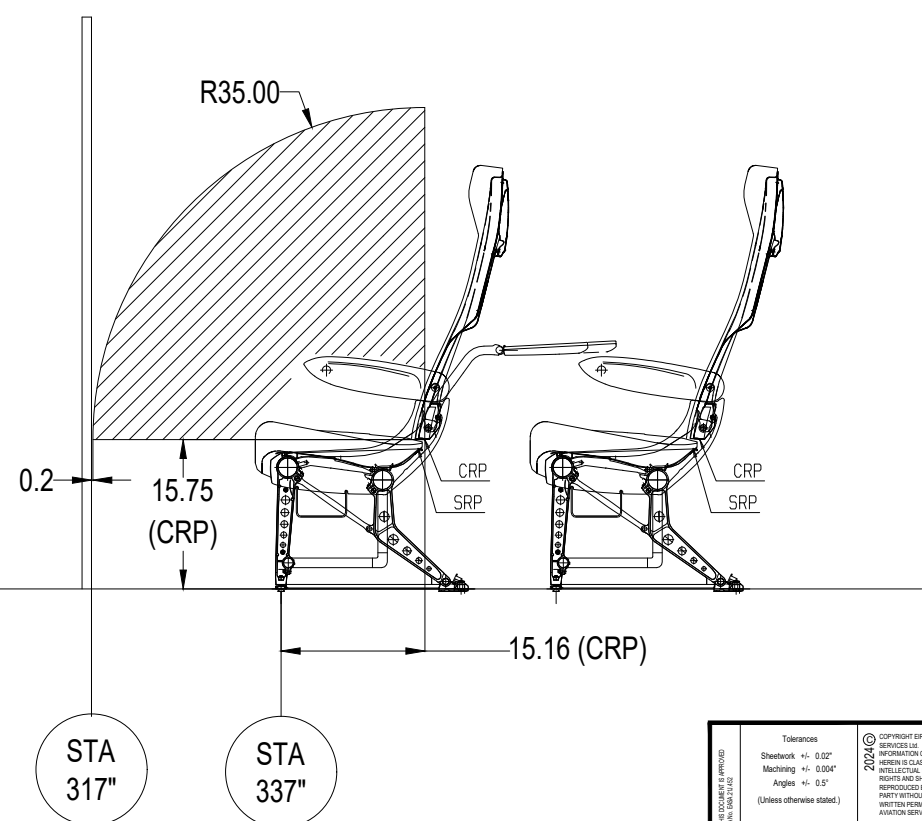
AISLE WIDTH
CONSTANT SECTION (VIEW FACING AFT), PER CMM 25-23-89, FIGURE 2
[NOTE: SEATS SHOWN FOR GRAPHICAL REPRESENTATION ONLY]

AFT LH ROW, CLEARANCE

AFT RH ROW, CLEARANCE 1



FRONT ROW, LHS



FRONT ROW, RHS

<small>THE TECHNICAL CONTENT OF THIS DRAWING IS APPROVED AND AUTHORIZED FOR RELEASE BY EIRTECH AVIATION SERVICES LTD.</small>		<small>2024 © COPYRIGHT EIRTECH AVIATION SERVICES LTD. ALL INFORMATION CONTAINED HEREIN IS CLASSIFIED AS UNCLASSIFIED. RIGHTS AND SHALL NOT BE REPRODUCED BY ANY THIRD PARTY WITHOUT THE PRIOR WRITTEN PERMISSION OF EIRTECH AVIATION SERVICES LTD.</small>			
Title: LOPA A321, 220Y					
Aircraft Type: A321	Drawing Issue No.: 2	Scale: NTS	DRG No. ERT/ 1735-210		She: 2 or 2